



### Cement Retainer

This drillable cement retainer can be run in cased holes on tubing or wireless with the associated setting tools.

Reliable in controlling squeeze cement operations and keeping hydrostatic pressure off the zone while the cement cures.

Easily converted to bridge plug.



### Cement Retainer Mechanical Setting Tool

Used to run, set and operate the cement retainer.



### Dual Pack Retrievable Straddle System

Versatile mechanical packer straddle assembly for isolating casing leaks and isolating zones in cased hole applications.

Compact and fast running single set packer that can be set on slick line, e-line coil tubing or pipe with the corresponding running tools.

Setting with downward pressure eliminates the need for in-hole rotation.

When the assembly is set, the bi-directional slips are protected from debris by the elements. This reduces the chance of sticking slips.

Retrieval tool attaches to fishing neck and packer is released with an upwards pull.

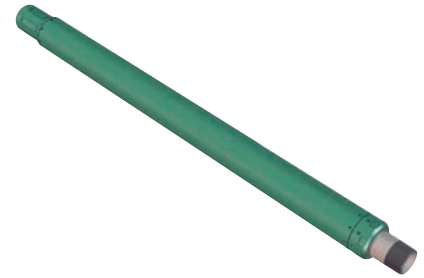


### Expansion Joint

Used to effectively accommodate tubing movement in the hole after the packer is set. Landing tubing in the wellhead is one such application.

Available in 2, 4, 6, 8, 10 or 12 foot lengths, the expansion joint can be shear-pinned at 2 foot intervals through its full stroke.

Expansion joints can be constructed with a solid one piece mandrel from a wide variety of material and seal material choices allowing customers to order to specification. Most sizes hold a psi rating of 10,000 psi.



### Sliding Sleeve

Run-on tubing and operated using wireline shifting equipment.

The sleeve is typically run on a production string and is used to establish communication between the tubing and casing annulus.

Used to facilitate zone-specific activities including testing and stimulation.

The sleeve can be opened and closed repeatedly and designed to ensure normal wireline operations will not be inadvertently open or closed.

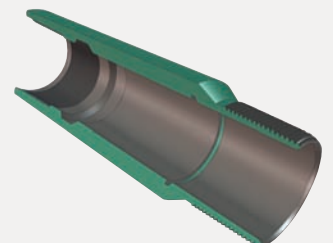


### No-Go Landing Nipple

A profiled sub run below the completion packers. The landing nipple allows various flow devices to be placed in the work string.

The No-Go shoulder ensures these flow control devices are not run and set below the tubing string.

Manufactured to be compliant in sour service applications.



### **GU Retrievable Bridge Plug**

Mechanical packer for use in high differential pressure and/or high temperature cased wells.

Can be run on slickline, wireline, coil tubing or pipe with appropriate running tool.

Set with downward pressure eliminating the need for rotations in hole.

While set the packer element protects the slips from debris, reducing the change of sticking slips.

Retrieved with GS style tool and released with upward pull.





**World Oil Tools**

[www.worldoiltools.com](http://www.worldoiltools.com)

#6, 3504 - 72 Ave SE  
Calgary, AB T2C 1J9 Canada  
Tel +1 403 720 5155  
Fax +1 403 720 5156